

Client _____ Quantity _____
Project _____ Position _____

Master Fish Combi 700 cabinet

Model: A70/2PB

Cod: A14070360201



Master Fish Combi 700 refrigerated cabinet, 2 doors, 2 separate compartments with 2 operating temperatures. Plug-in refrigeration unit, 5 heavy duty climatic class and R290 ecological refrigerant gas. Equipment: 2 GN2/1 plastic coated shelves and 4 GN1/1 ABS fish pans with false bottom, lock with key, led lighting, water drain. Temperature range compartment A: -6°+4°C; compartment B: -18°-22°C; ventilated refrigeration. Anti-corrosion treated evaporator, hot gas defrost. 75 mm insulation thickness - HFO with high insulation performance and low environmental impact (CFC, HCFC, HFC free). AISI 304 stainless steel handle and magnetic triple chamber door gasket, easily replaceable. Reversible, self-closing door opening with 105° stop. One-piece structure, interior/exterior AISI 304 stainless steel; outside back, external base and inside technical compartment in galvanised/colaminated steel. Rounded inner corners for easy cleaning. The reinforced modular base in colaminated steel allows installation on wheels, feet, mobile or masonry plinths. Replaceable refrigerant system FSS - Fast Service System - for quick and easy service. Predisposed for connection to Cosmo remote supervision system and ModBus/RTU Rs485 connection.

Technical data

Gross capacity:	562 lt
Temperature range:	-6°+4°C/-18°-22°C
Refrigerant unit:	Plug-in
Climate class:	5
Cooling gas:	R290
Defrost:	Hot gas
Valve:	Supplied standard with solenoid
Dimensions:	740×815×2085 mm
Packing dimensions:	835×930×2138 mm
Gross weight:	190 Kg
Voltage:	220-240 V - 50 Hz
Total rate:	720 W
Absorbed Current:	3,3 A
Cooling capacity:	406 W*
Cooling capacity 2:	356 W*
*:	Evap. -10°C/-30°C Cond. +55°C

Features

Standard equipment:	4 coppie guida per griglie GN2/1 2 griglie GN2/1 4 vaschette abs GN1/1 Serratura con chiave Illuminazione LED Piletta di scarico
Control:	Electronic, display flush with the panel
Doors:	2 sportelli, autochiudenti con fermo a 105°, cerniere a destra
Door gasket:	Magnetic, triple chamber and easily replaceable
Insulation:	75 mm thickness - CFC/HCFC free
Exterior/interior finishing:	Exterior and interior AISI 304 stainless steel. Back, base and internal technical compartment in galvanized/colaminated steel.
Inner corners:	Rounded for easy cleaning and ensuring maximum hygiene
Handle:	Stainless steel AISI 304, 2 mm thick
Racks and slides:	Stainless steel AISI 304
Feets:	AISI 304 stainless steel adjustable h 100/150 mm
Cosmo:	Predisposed for Cosmo Hub connection

Accessories and variants

Alimentazione frequenza 60Hz

Other special voltage

Frame for fixed masonry plinth

RAL customisable colouring

Master Marine solutions

Predisposition for connection to CO2 remote control unit

4 Swivel and brake castors h 128 mm

Stainless steel shelf GN2/1

Plastic coated shelf GN2/1

Pair of type C slides 605 mm

Stainless steel drawer, h 150 mm 700/1400

Bottles shelf, stainless steel coating for shelf 700/1400

Serial interface, RS485 cable

Cosmo cable connection kit

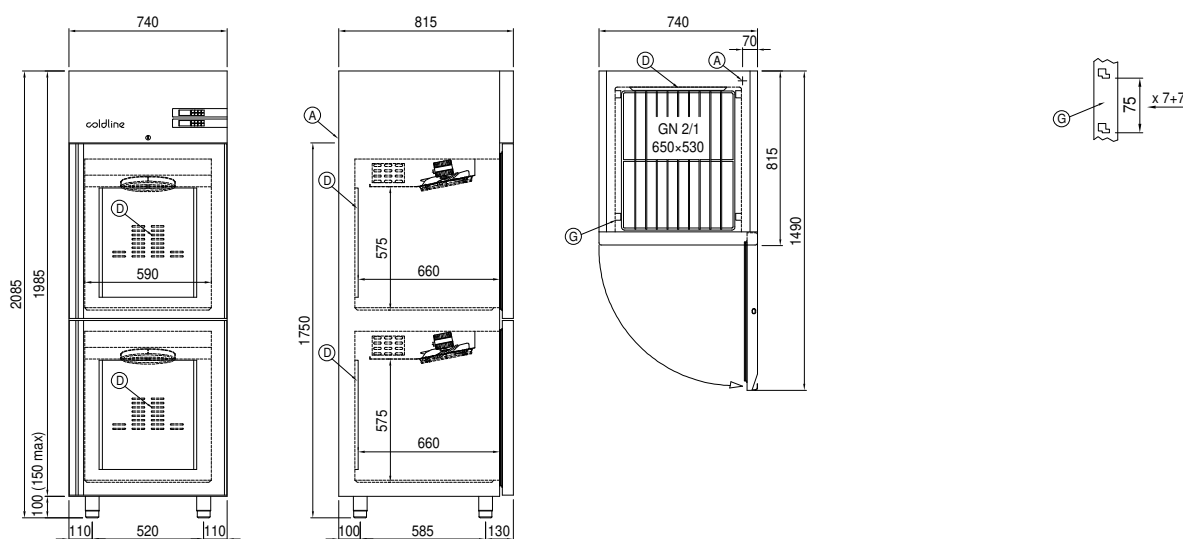
Cosmo wifi connection kit

ABS fish pan GN1/1 with perforated false bottom 2 pieces

COSMO - wi-fi control

Cosmo is The Nice Kitchen's exclusive wi-fi technology that allows Coldline, Modular and Nevo appliances to be connected and monitored from a smartphone. The cabinet, connected with Cosmo kit via cable to a Cosmo hub (MODI, VISION, THAW.PRO, Levtronic, QUBI) or with Cosmo wi-fi kit, can be monitored by the CosmoApp and receive alerts in case of abnormal operation.

Technical draw



A: Power supply cable outlet

D: Airflow conveyor

G: Racks pitch

P: Water drain