

Client \_\_\_\_\_ Quantity \_\_\_\_\_  
Project \_\_\_\_\_ Position \_\_\_\_\_

## Master GN counter 3 doors

Model: TP17/1MR-710

Cod: T10311000201

Master refrigerated counter 3 doors, counter body height 710 mm, with top. Remote refrigeration unit, 5 heavy duty climatic class and R452a refrigerant gas. Temperature range -2°+8°C with ventilated refrigeration. Equipment: 1 GN1/1 plastic coated shelf. Each compartment can be configured with 1/2+1/2, 1/3+2/3, 1/3+1/3+1/3 drawers. Anti-corrosion treated evaporator and electric defrosting. 60 mm insulation thickness - HFO with high insulation performance and low environmental impact (CFC, HCFC, HFC free). AISI 304 stainless steel handle and magnetic triple chamber door gasket, easily replaceable. Reversible, self-closing door opening with 105° stop. AISI 304 stainless steel interior/exterior including external back. Rounded inner corners for easy cleaning. The reinforced modular base in colaminated steel allows installation on wheels, feet, mobile or masonry plinths. Replaceable refrigerant system FSS - Fast Service System - for quick and easy service. Prepared for connection to Cosmo - wi-fi remote supervision system - and ModBus/RTU Rs485 connection.



### Technical data

|                     |                                 |
|---------------------|---------------------------------|
| Top:                | With top                        |
| Gross capacity:     | 440 lt                          |
| Temperature range:  | -2°+8°C                         |
| Refrigerant unit:   | remote                          |
| Cooling gas:        | R452a                           |
| Defrost:            | Electric                        |
| Body height:        | 710 mm                          |
| Valve:              | Supplied standard with solenoid |
| Dimensions:         | 1570×700×850 mm                 |
| Packing dimensions: | 1875×800×998 mm                 |
| Gross weight:       | 145 Kg                          |
| Voltage:            | 220-240 V - 50-60 Hz            |
| Total rate:         | 810 W                           |
| Absorbed Current:   | 3,7 A                           |
| Cooling capacity:   | 668 W*                          |
| *:                  | Evap. -10°C Cond. +55°C         |

### Features

|                              |  |
|------------------------------|--|
| Standard equipment:          | 3 slides, 3 plastic coated GN1/1 shelves   |
| Control:                     | Electronic, display flush with the panel   |
| Doors:                       | 3 doors, self-closing, reversible with 105° stop                                   |
| Door gasket:                 | Magnetic, triple chamber and easily replaceable                                    |
| Insulation:                  | 60 mm thickness - CFC/HCFC free  |
| Exterior/interior finishing: | Exterior interior and back in AISI 304 stainless steel. Base in colaminated steel. |
| Inner corners:               | Rounded for easy cleaning and ensuring maximum hygiene                             |
| Handle:                      | Stainless steel AISI 304, 2 mm thick   |
| Racks and slides:            | Stainless steel AISI 304   |
| Feets:                       | AISI 304 stainless steel adjustable h 100/150 mm                                   |
| Cosmo:                       | Predisposed for Cosmo Hub connection   |

### Accessories and variants

|  |  |
|--|--|
| Drawers 1/2  | Internal hygiene H3                                  |
| Drawers 1/3  | Granite flat worktop                                 |
| Drawers 1/3 + 2/3  | Granite worktop with splashback                      |
| Special counter body heights 650 mm                      | Remote condensing unit NEK6210GK                     |
| Special counter body heights 700 mm                      | Adjustable feet h 145/195 mm                         |
| Special counter body heights 750 mm                      | 4 Swivel and brake castors h 128 mm                  |
| Technical compartment on the left                        | Brackets for GN pans for drawer                      |
| Common technical compartment                             | GN1/2 container + lids kit for drawer, h 150 mm      |
| Counters without a technical compartment                 | GN1/3 container + lids kit for drawer, h 150 mm      |
| Lock with key for drawer 1/2                             | Bottles shelf, stainless steel coating for shelf 350 |
| Lock with key for drawer 1/3                             | Stainless steel shelf GN1/1                          |
| Lock with key for drawer 1/3 + 2/3                       | Plastic coated shelf GN1/1                           |
| Glass door   | Pair of type C slides 505 mm                         |
| LED lighting   | Serial interface, RS485 cable                        |
| RAL customisable colouring                               | Cosmo cable connection kit                           |
| Stainless steel evaporator                               | Cosmo wifi connection kit                            |
| Predisposition for connection to CO2 remote control unit | Removable plinth GN 3DR h 100 mm                     |
| Alimentazione frequenza 60Hz                             | Removable plinth GN 3DR h 150 mm                     |
| Other special voltage                                    | R134a valve  |

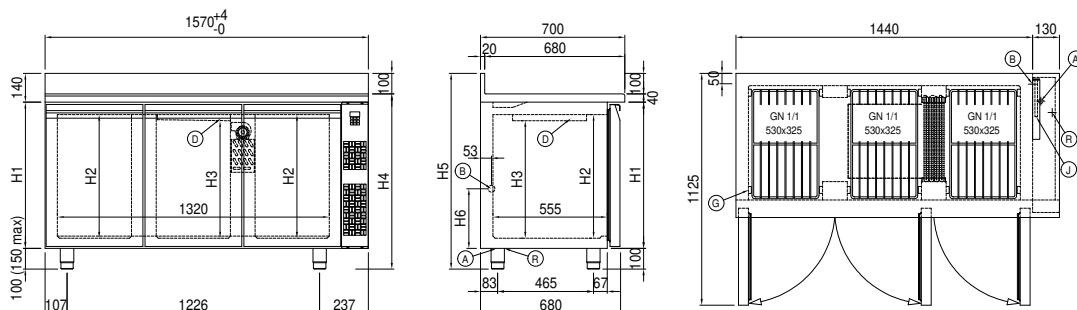
### Remote unit technical data

|                     |                         |
|---------------------|-------------------------|
| Voltage:            | 220-240 V - 50 Hz       |
| Cooling gas:        | R452A                   |
| Gross weight:       | 16 Kg                   |
| Dimensions:         | 480×330×295 mm          |
| Packing dimensions: | 540×345×310 mm          |
| Cooling capacity:   | Evap. -10°C Cond. +55°C |

### COSMO - wi-fi control

Cosmo is The Nice Kitchen's exclusive wi-fi technology that allows Coldline, Modular and Nevo appliances to be connected and monitored from a smartphone. The counter, connected with Cosmo kit via cable to a Cosmo hub (MODI, VISION, THAW.PRO, Levtronic, QUBI) or with Cosmo wi-fi kit, can be monitored by the CosmoApp and receive alerts in case of abnormal operation.

### Technical draw



A: Power supply cable outlet

B: Condensation water drain

D: Airflow conveyor

G: Racks pitch

J: Automatic evaporation of condensing water

R: Gas output pipes