

Client \_\_\_\_\_ Quantity \_\_\_\_\_  
Project \_\_\_\_\_ Position \_\_\_\_\_

## Master 600 counter 3 doors

Model: TS17/1BQ-660

Cod: T12300000403

Master 600 refrigerated counter 1 door, counter body height 660 mm, without top. Plug-in refrigeration unit, D energetic class, 5 heavy duty climatic class and R290 ecological refrigerant gas. Temperature range -15°-22°C with ventilated refrigeration. Equipment: 3 325x430 mm plastic coated shelves. Each compartment can be configured with 1/2+1/2, 1/3+2/3, 1/3+1/3+1/3 drawers. Anti-corrosion treated evaporator and hot gas defrosting. 60 mm insulation thickness - HFO with high insulation performance and low environmental impact (CFC, HCFC, HFC free). AISI 304 stainless steel handle and magnetic triple chamber door gasket, easily replaceable. Reversible, self-closing door opening with 105° stop. AISI 304 stainless steel interior/exterior including external back. Rounded inner corners for easy cleaning. The reinforced modular base in colaminated steel allows installation on wheels, feet, mobile or masonry plinths. Replaceable refrigerant system FSS - Fast Service System - for quick and easy service. Prepared for connection to Cosmo - wi-fi remote supervision system - and ModBus/RTU Rs485 connection.



### Technical data

|                          |                                 |
|--------------------------|---------------------------------|
| Top:                     | Without top                     |
| Gross capacity:          | 330 lt                          |
| Temperature range:       | -15°-22°C                       |
| Refrigerant unit:        | Plug-in                         |
| Energetic class:         | D                               |
| Energy efficiency index: | 59,8                            |
| Annual consumption:      | 2124 kW/h annum                 |
| 24h consumption:         | 5,819 kW/h/24h                  |
| Climate class:           | 5                               |
| Cooling gas:             | R290 (GWP=3)                    |
| Refrigerant Charge:      | 110g                            |
| Defrost:                 | Hot gas                         |
| Body height:             | 660 mm                          |
| Valve:                   | Supplied standard with solenoid |
| Dimensions:              | 1780×580×760 mm                 |
| Packing dimensions:      | 1875×800×998 mm                 |
| Voltage:                 | 220-240 V - 50 Hz               |
| Cooling capacity:        | 569 W*                          |
| *:                       | Evap. -30°C Cond. +55°C         |

### Features

|                              |  |
|------------------------------|--|
| Standard equipment:          | 3 slides, 3 plastic coated 325x430 mm shelves                                      |
| Control:                     | Electronic, display flush with the panel   |
| Doors:                       | 3 doors, self-closing, reversible with 105° stop                                   |
| Door gasket:                 | Magnetic, triple chamber and easily replaceable                                    |
| Insulation:                  | 60 mm thickness - CFC/HCFC free  |
| Exterior/interior finishing: | Exterior interior and back in AISI 304 stainless steel. Base in colaminated steel. |
| Inner corners:               | Rounded for easy cleaning and ensuring maximum hygiene                             |
| Handle:                      | Stainless steel AISI 304, 2 mm thick   |
| Racks and slides:            | Stainless steel AISI 304   |
| Feets:                       | AISI 304 stainless steel adjustable h 100/150 mm                                   |
| Cosmo:                       | Predisposed for Cosmo Hub connection   |

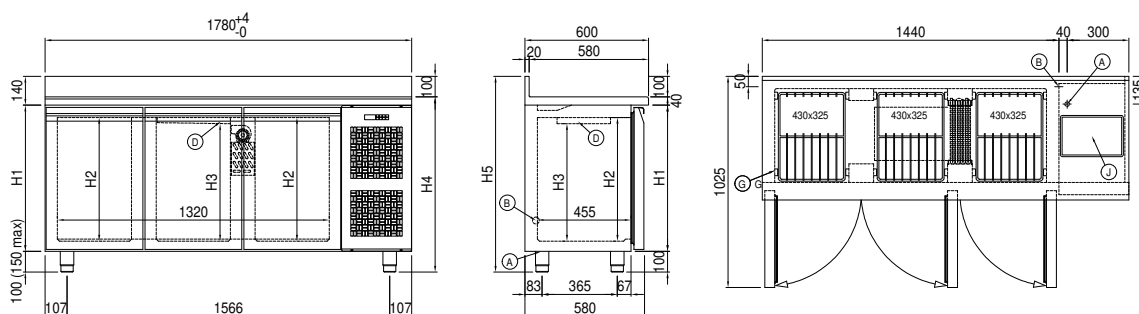
## Accessories and variants

|                                     |   |
|-------------------------------------|---|
| Drawers 1/2                         | Granite flat worktop                            |
| Drawers 1/3                         | Granite worktop with splashback                 |
| Drawers 1/3 + 2/3                   | Service water sink Ø 300 mm                     |
| Special counter body heights 650 mm | Single lever mixer hole Ø 3/4                   |
| Special counter body heights 700 mm | Adjustable feet h 145/195 mm                    |
| Special counter body heights 750 mm | 4 Swivel and brake castors h 128 mm             |
| Technical compartment on the left   | Brackets for GN pans for drawer                 |
| Lock with key for drawer 1/2        | GN1/2 container + lids kit for drawer, h 150 mm |
| Lock with key for drawer 1/3        | GN1/3 container + lids kit for drawer, h 150 mm |
| Lock with key for drawer 1/3 + 2/3  | Plastic coated shelf 325x430                    |
| LED lighting                        | Pair of type C slides 405 mm                    |
| RAL customisable colouring          | Serial interface, RS485 cable                   |
| Plug-in water unit                  | IP44 schuko socket with cover                   |
| Alimentazione frequenza 60Hz        | Cosmo cable connection kit                      |
| Other special voltage               | Cosmo wifi connection kit                       |
| Internal hygiene H3                 | Removable plinth CQ 3D h 100 mm                 |

## COSMO - wi-fi control

Cosmo is The Nice Kitchen's exclusive Wi-Fi technology that allows Coldline, Modular and Nevo appliances to be connected and monitored from a smartphone. The counter, connected with Cosmo kit via cable to a Cosmo hub (MODI, VISION, THAW.PRO, LEVTRONIC, QUBI) or with Cosmo Wi-Fi kit, can be monitored by the CosmoApp and receive alerts in case of abnormal operation.

## Technical draw



|    |                           |    |   |    |                  |
|----|---------------------------|----|---|----|------------------|
| A: | Power supply cable outlet | B: | Condensation water drain                  | D: | Airflow conveyor |
| G: | Racks pitch               | J: | Automatic evaporation of condensing water |    |                  |