

Client \_\_\_\_\_ Quantity \_\_\_\_\_  
Project \_\_\_\_\_ Position \_\_\_\_\_

## Roll-in Vision JF80

Model: JF80/1KTR

Cod: J61803900101



Vision JF80 retarder prover cabinet, 1 door, temperature range -30°+40°C. It is equipped with the functions: retarded proving, manual proving, continuous cycle, storage, thawing, chocolate, ice cream. Remote refrigeration unit, 5 heavy duty climatic class and R452a refrigerant gas. Electric defrost, adjustable ventilation 25-100% and adjustable humidity 45-95%. Water purification filter. 7" touch screen and operating mode with customisable recipes. For trolley EN60x80, access ramp included. led strip lighting, water drain, Electronic expansion valve and anti-corrosion painted evaporator. 100 mm insulation thickness - HFO with high insulation performance and low environmental impact (CFC, HCFC, HFC free); easily replaceable triple chamber magnetic gasket. AISI 304 stainless steel handle and magnetic triple chamber door gasket, easily replaceable. Interior/exterior AISI 304 stainless steel; external back in galvanised steel. 2 compressors and 2 independent refrigeration circuits. Cosmo: wi-fi connection for remote monitoring via Cosmo App. When wired to Coldline counters and cabinets acts as a hub for remote monitoring of connected equipment.

### Technical data

Max capacity:	2 trolleys
Gross capacity:	1558 lt
Temperature range:	-30°+40°C
Humidity range:	45% - 95% with humidifier
Humidifier:	Including
Refrigerant unit:	remote
Cooling gas:	R452a (GWP=2.141)
Defrost:	Electric
Valve:	Supplied standard with solenoid
Dimensions:	960×1276×2465 mm
Packing dimensions:	980×1240×2630 mm
Voltage:	220-240 V - 50-60 Hz
Cooling capacity:	1292 W*
*:	Evap. -30°C Cond. +55°C

### Features

Functions:	Retarder prover, manual proving, continuous cycle, storage, chocolate, thawing, ice cream
Standard equipment:	LED lighting
Control:	7" touch screen display with USB port
Doors:	1 door, self-closing, reversible with 105° stop
Door gasket:	Magnetic, triple chamber and easily replaceable
Insulation:	100 mm thickness - CFC/HCFC free
Exterior/interior finishing:	One-piece structure in AISI 304 stainless steel. Back in galvanized steel
Inner corners:	Rounded for easy cleaning and ensuring maximum hygiene
Handle:	Snap-in chrome with integrated lock
Cosmo:	Wi-Fi remote control system

### Accessories and variants

RAL customisable colouring	Remote condensing unit NT2180GK
Alimentazione frequenza 60Hz	Purity C Quell ST 50 filter cartridge
Other special voltage	Trolley EN60x80 20 trays 660x820x1750 mm

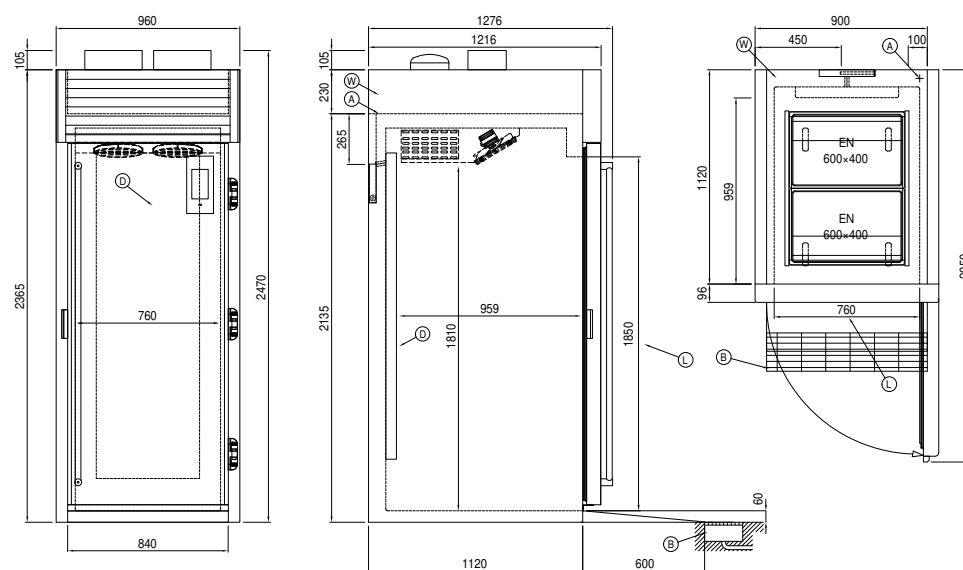
### Remote unit technical data

Voltage:	220-240 V - 50 Hz
Cooling gas:	R452A
Gross weight:	30,2 Kg
Dimensions:	500×330×295 mm
Pipe delivery:	Ø 1/4"
Pipe suction:	Ø 3/8"
Packing dimensions:	540×345×310 mm
Cooling capacity:	Evap. -30°C Cond. +55°C

### COSMO - wi-fi control

Cosmo is The Nice Kitchen's exclusive Wi-Fi technology that allows VISION retarder provers to be connected, updated and monitored from smartphones. VISION is also a Cosmo hub and allows remote supervision of the Coldline appliances connected to it. From the CosmoApp you can check the operating conditions of each machine and receive alerts in the event of abnormal operation.

### Technical draw



A:	Power supply cable outlet	B:	Condensation water drain	D:	Airflow conveyor
L:	Door clear opening dimension	W:	Water mains connection for humidifier - 3/4" female. Unloading not required		